

## 5 Wheel bearing

⇒ [“5.1 Summary of components - Wheel bearing”, page 131](#)

⇒ [“5.2 Removing and installing the wheel hub with wheel bearing”, page 132](#)

⇒ [“5.3 Removing and installing wheel bearing housing”, page 136](#)

### 5.1 Summary of components - Wheel bearing

#### 1 - Wheel hub with wheel bearing

- ☐ 3-point support - FS III brake
- ☐ Removing and installing ⇒ [“5.2 Removing and installing the wheel hub with wheel bearing”, page 132](#)
- ☐ Sensor ring for ABS is built into the wheel hub
- ☐ Assignment ⇒ Electronic Catalogue of Original parts

#### 2 - Wheel bearing housing

- ☐ 3-point support - FS III brake
- ☐ Removing and installing ⇒ [“5.3 Removing and installing wheel bearing housing”, page 136](#)
- ☐ If the wheel bearing housing is replaced, the vehicle must be aligned ⇒ [“3 Axle alignment”, page 325](#)
- ☐ Assignment ⇒ Electronic Catalogue of Original parts

#### 3 - Screw

- ☐ replace after each removal
- ☐ 70 Nm + 90°.

#### 4 - Screw

- ☐ Tightening torque ⇒  
Brake systems; Rep. gr. 45

#### 5 - Front left wheel speed sensor - G47- / Front right wheel speed sensor - G45-

- ☐ removing and installing ⇒ Brake systems; Rep. gr. 45

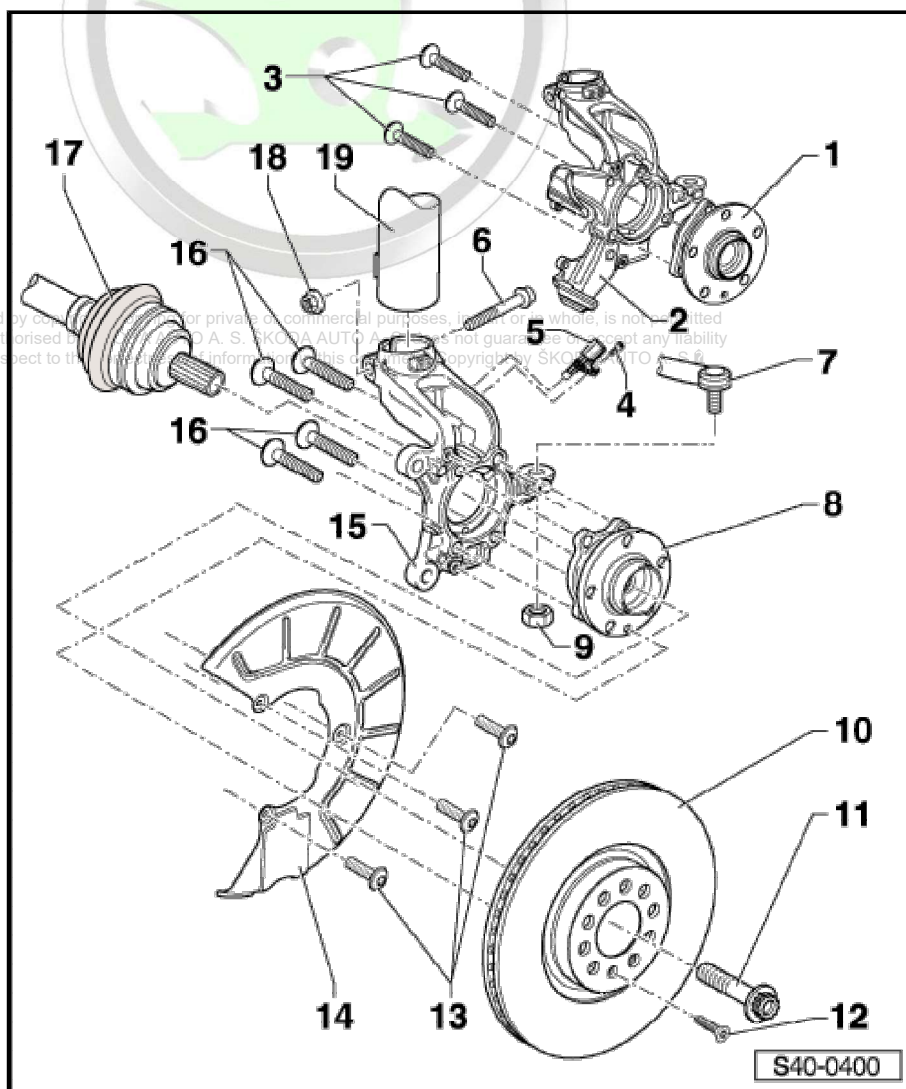
#### 6 - Screw

- ☐ the tip of bolt must point in the direction of travel

#### 7 - Track rod end

#### 8 - Wheel hub with wheel bearing

- ☐ 4-point support - FN3 brake
- ☐ Removing and installing ⇒ [“5.2 Removing and installing the wheel hub with wheel bearing”, page 132](#)
- ☐ Sensor ring for ABS is built into the wheel hub





- ☐ Assignment ⇒ Electronic Catalogue of Original parts

## 9 - Nut

- ☐ self-locking
- ☐ replace after each removal
- ☐ Tightening torque ⇒ ["2.1 Summary of components - steering gear", page 360](#)

## 10 - Brake disc

- ☐ internally ventilated

## 11 - Screw

- ☐ replace after each removal
- ☐ Assignment ⇒ Electronic Catalogue of Original parts
- ☐ When loosening and tightening the screw, the prescribed procedure must be followed
- ☐ Removing and installing ⇒ ["6.5 Loosen and tighten cardan shaft screwed connection", page 164](#)
- ☐ Tightening torque ⇒ ["6.5 Loosen and tighten cardan shaft screwed connection", page 164](#)

## 12 - Screw

- ☐ removing and installing ⇒ Brake systems; Rep. gr. 46

## 13 - Screw

- ☐ removing and installing ⇒ Brake systems; Rep. gr. 46

## 14 - Cover plate

## 15 - Wheel bearing housing

- ☐ 4-point support - FN3 brake
- ☐ Removing and installing ⇒ ["5.3 Removing and installing wheel bearing housing", page 136](#)
- ☐ If the wheel bearing housing is replaced, the vehicle must be aligned ⇒ ["3 Axle alignment", page 325](#)
- ☐ Assignment ⇒ Electronic Catalogue of Original parts

## 16 - Screw

- ☐ replace after each removal
- ☐ 70 Nm + 90°.

## 17 - Drive shaft

- ☐ Removing and installing ⇒ ["6 Drive shaft", page 141](#)

## 18 - Nut

- ☐ self-locking
- ☐ replace after each removal
- ☐ 70 Nm + 90°.

## 19 - Suspension strut

## 5.2 Removing and installing the wheel hub with wheel bearing

### Removing

- Remove fixing screw of drive shaft at wheel hub  
⇒ ["6.5 Loosen and tighten cardan shaft screwed connection", page 164](#).

Protected by copyright. Copying for private or commercial purposes, in part or in whole, is not permitted unless authorised by ŠKODA AUTO A. S. ŠKODA AUTO A. S. does not guarantee or accept any liability with respect to the correctness of information in this document. Copyright by ŠKODA AUTO A. S. ©



## Note

- ◆ *Wheel bearings must not be subjected to load after bolt securing cardan shaft to wheel hub has been loosened.*
- ◆ *If the wheel bearings are loaded through the vehicle's own weight, the wheel bearing will be initially damaged. This shortens the life of the wheel bearing.*
- ◆ *It is not permissible to turn cardan shaft screw more than 90° anti-clockwise if vehicle is standing on its wheels.*
- ◆ *Do not attempt to move the vehicle without the cardan shafts fitted as this would damage the wheel bearing. If a vehicle nevertheless has to be moved, comply with the following:*
- ◆ *Install an outer joint instead of the cardan shaft.*
- ◆ *Tighten outer joint to 120 Nm.*

- Remove wheel.
- Remove brake caliper with brake carrier and tie with wire to the body ⇒ Brake systems; Rep. gr. 46 .
- Remove the ABS-speed sensor ⇒ Brake systems; Rep. gr. 45 .
- Remove brake disc ⇒ Brake systems; Rep. gr. 46 .

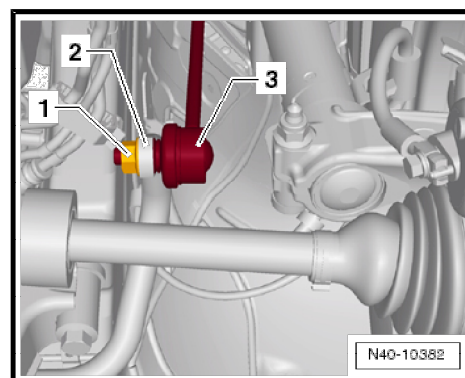
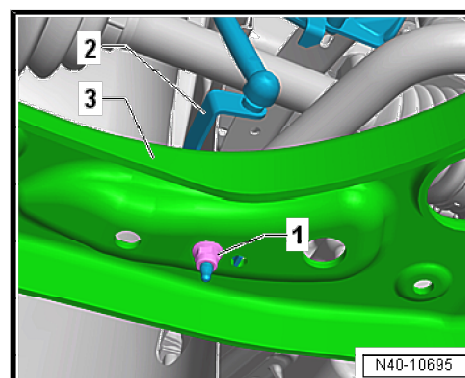
Protected by copyright. Copying for private or commercial purposes, in part or in whole, is not permitted unless authorised by ŠKODA AUTO A. S. ŠKODA AUTO A. S. does not guarantee or accept any liability for errors or omissions. Copyright by ŠKODA AUTO A. S. ©

## Vehicles with vehicle level sender

- Remove nut - 1 -.
- Remove the holder -2- of the front left vehicle level encoder - G78- from the wishbone -3-.

## Continued for all vehicles

- Remove coupling rod -3- from the anti-roll bar -2-.





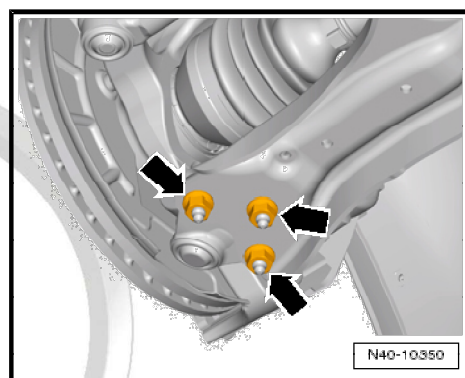
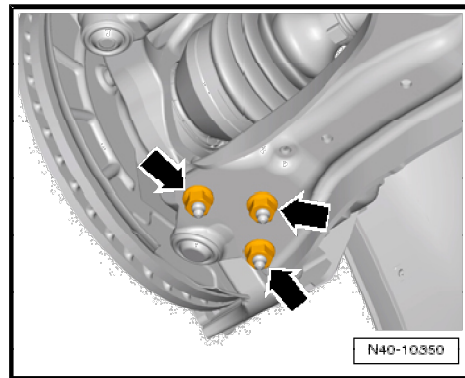
- Release fixing nuts -arrows-.
- Unhook steering joint out of the suspension link.
- Swivel out the wheel-bearing housing with the suspension strut and simultaneously pull the cardan shaft out of the wheel hub and attach it to the body e.g with a wire.



### Note

- ♦ *If the cardan shaft cannot be removed from the wheel hub, it can be pressed out using the extractor  
⇒ "6.4.4 Push the cardan shaft out of the wheel hub."  
page 161 .*
- ♦ *The cardan shaft must not hang down, otherwise the inner joint will be damaged.*

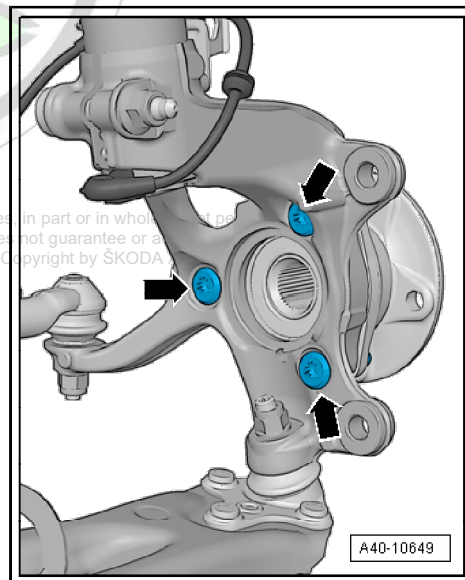
- Screw suspension link to the suspension link again -arrows-.



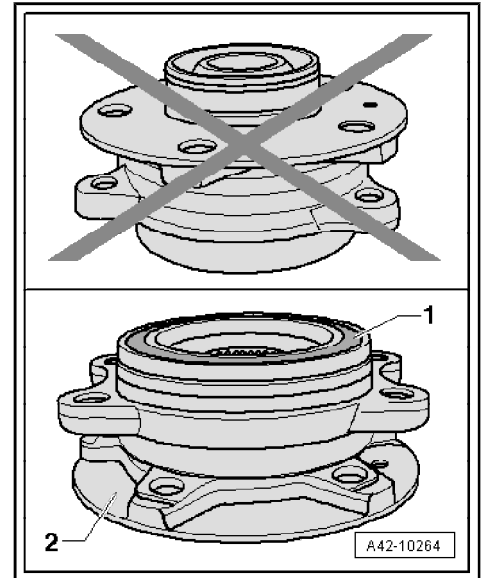
- Remove screws -arrows-.

Depending on the build status, the wheel hub with wheel bearing is supported with 3 or 4 screws.

- Remove the wheel bearing out of the wheel-bearing housing.



Protected by copyright. Copying for private or commercial purposes in part or in whole is prohibited unless authorised by ŠKODA AUTO A. S. ŠKODA AUTO A. S. does not guarantee or accept any liability with respect to the correctness of information in this document. Copyright by ŠKODA.



# ŠKODA



Protected by copyright. Copying for private or commercial purposes, in part or in whole, is not permitted unless authorised by ŠKODA AUTO A. S. ŠKODA AUTO A. S. does not guarantee or accept any liability with respect to the correctness of information in this document. Copyright by ŠKODA AUTO A. S. ®



- When laying the wheel bearing unit in position, the wheel bearing -1- must always point upwards.
- Always lay the wheel bearing unit on the wheel hub -2-.
- When picking up the wheel bearing, never take hold from the inside.
- Only take hold of the wheel bearing from the outside.

### Installing

Installation is performed in the reverse order; pay attention to the following points:

- Tighten fixing screw of drive shaft to wheel hub  
⇒ [“6.5 Loosen and tighten cardan shaft screwed connection”, page 164](#).



### Note

*When tightening the fixing screw of the drive shaft, the wheel must be raised until it is fully off the ground, otherwise the wheel bearing can be damaged.*

- On vehicles with vehicle level sensor, carry out a basic setting for the headlights ⇒ Maintenance ; Booklet Yeti .

### Tightening torques - summaries of components



### Note

*Replace bolts / nuts that are tightened at an angle of rotation, as well as replacement components after removal.*

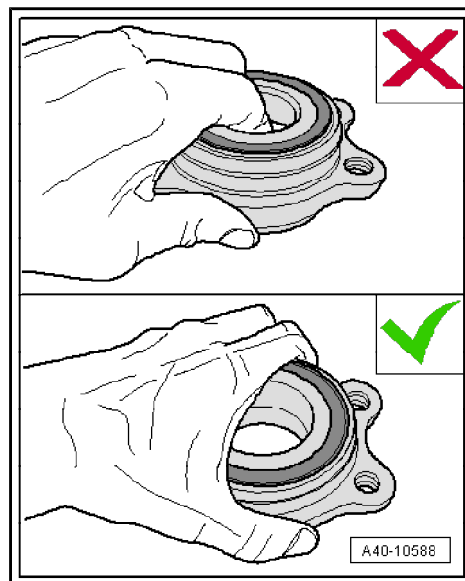
- ♦ ⇒ [“5.1 Summary of components - Wheel bearing”, page 131](#)
- ♦ ⇒ [“2.1.1 Assembly overview - subframe, aluminium subframe, left-hand drive”, page 10](#)
- ♦ ⇒ [“2.1.2 Assembly overview - subframe, aluminium subframe, right hand drive”, page 15](#)
- ♦ ⇒ [“3.1.1 Assembly overview - subframe, sheet steel assembly carrier, left-hand drive”, page 67](#)
- ♦ ⇒ [“3.1.2 Assembly overview - subframe, sheet steel assembly carrier, right hand drive”, page 71](#)
- ♦ ⇒ [“6.5 Loosen and tighten cardan shaft screwed connection”, page 164](#)
- ♦ ⇒ [“1.2 Tightening torque of the wheel screws”, page 321](#)
- ♦ ABS speed sensor ⇒ Brake systems; Rep. gr. 45
- ♦ Brake disc, brake caliper, brake carrier ⇒ Braking systems; Rep. gr. 46

Protected by copyright. Copying for private or commercial purposes, in part or in whole, is not permitted unless authorised by ŠKODA AUTO A. S. ŠKODA AUTO A. S. does not guarantee or accept any liability for the content of this document. © 2018 ŠKODA AUTO A. S.

## 5.3 Removing and installing wheel bearing housing

### Removing

- Remove fixing screw of drive shaft at wheel hub  
⇒ [“6.5 Loosen and tighten cardan shaft screwed connection”, page 164](#).





**i Note**

- ◆ *Wheel bearings must not be subjected to load after bolt securing cardan shaft to wheel hub has been loosened.*
- ◆ *If the wheel bearings are loaded through the vehicle's own weight, the wheel bearing will be initially damaged. This shortens the life of the wheel bearing.*
- ◆ *It is not permissible to turn cardan shaft screw more than 90° anti-clockwise if vehicle is standing on its wheels.*
- ◆ *Do not attempt to move the vehicle without the cardan shafts fitted as this would damage the wheel bearing. If a vehicle nevertheless has to be moved, comply with the following:*
- ◆ *Install an outer joint instead of the cardan shaft.*
- ◆ *Tighten outer joint to 120 Nm.*

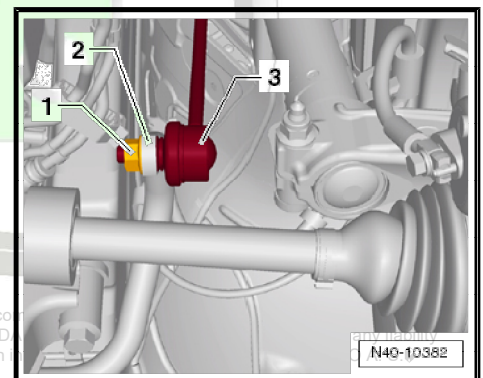
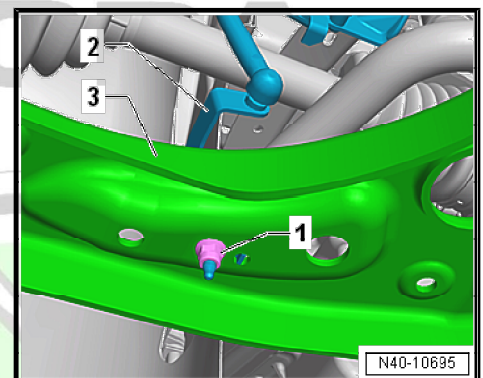
- Remove wheel.
- Remove brake caliper with brake carrier and tie with wire to the body ⇒ Brake systems; Rep. gr. 46 .
- Remove the ABS-speed sensor ⇒ Brake systems; Rep. gr. 45 .
- Remove brake disc ⇒ Brake systems; Rep. gr. 46 .

**Vehicles with vehicle level sender**

- Remove nut - 1 -.
- Remove the holder -2- of the front left vehicle level encoder - G78- from the wishbone -3-.

**Continued for all vehicles**

- Remove coupling rod -3- from the anti-roll bar -2-.
- Pull out coupling rod -3- from the anti-roll bar -2-.



Protected by copyright. Copying for private or commercial use without permission is prohibited.  
unless authorised by ŠKODA AUTO A. S. ŠKODA  
with respect to the correctness of information.



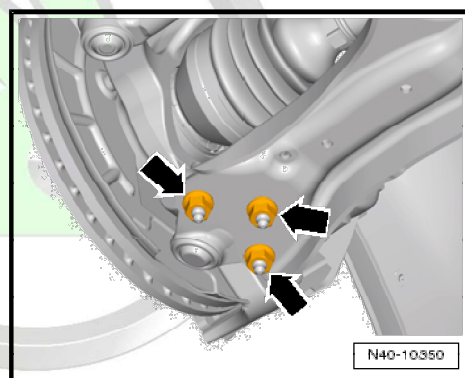
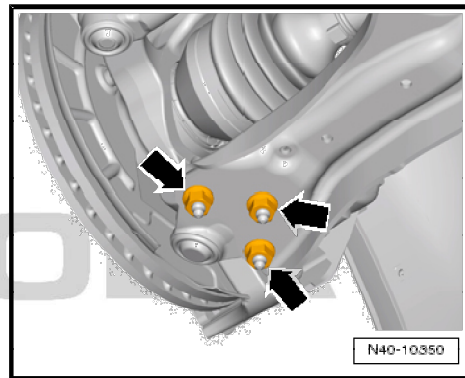
- Release fixing nuts -arrows-.
- Unhook steering joint out of the suspension link.
- Swivel out the wheel-bearing housing with the suspension strut and simultaneously pull the cardan shaft out of the wheel hub and attach it to the body e.g with a wire.



#### Note

- ◆ *The cardan shaft must not hang down, otherwise the inner joint will be damaged.*
- ◆ *If the cardan shaft cannot be removed from the wheel hub, it can be pressed out using the extractor  
⇒ "6.4.4 Push the cardan shaft out of the wheel hub.",  
[page 161](#).*

- Screw suspension link to the suspension link again -arrows-.

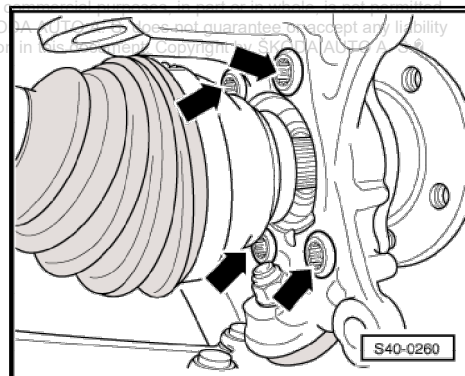


- Remove screws -arrows-.
- Pull the wheel hub with wheel bearing out of the wheel-bearing housing.

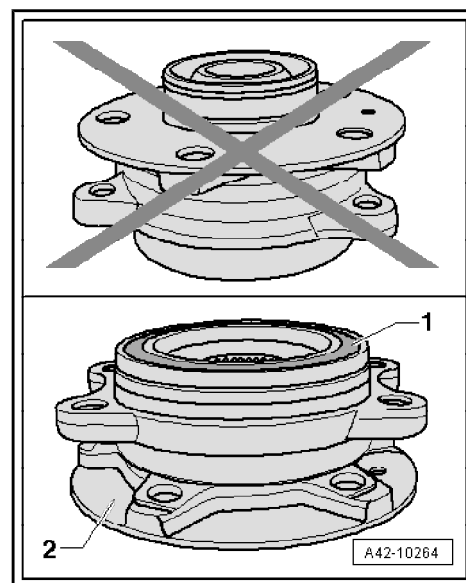


#### Note

*Prevent soiling and damage to the seal when picking up, lay to one side/store.*







Protected by copyright. Copying for private or commercial purposes, in part or in whole, is not permitted unless authorised by ŠKODA AUTO A. S. ŠKODA AUTO A. S. does not guarantee or accept any liability with respect to the correctness of information in this document. Copyright by ŠKODA AUTO A. S.®



- When laying the wheel bearing unit in position, the wheel bearing -1- must always point upwards.
- Always lay the wheel bearing unit on the wheel hub -2-.
- When picking up the wheel bearing, never take hold from the inside.
- Only take hold of the wheel bearing from the outside.

### Installing

Installation is performed in the reverse order; pay attention to the following points:

- Tighten fixing screw of drive shaft to wheel hub  
⇒ ["6.5 Loosen and tighten cardan shaft screwed connection", page 164](#).



### Note

*When tightening the fixing screw of the drive shaft, the wheel must be raised until it is fully off the ground, otherwise the wheel bearing can be damaged.*

- On vehicles with vehicle level sensor, carry out a basic setting for the headlights ⇒ Maintenance ; Booklet Yeti.

### Tightening torques - summaries of components



### Note

*Replace bolts / nuts that are tightened at an angle of rotation, as well as replacement components after removal.*

- ◆ ⇒ ["5.1 Summary of components - Wheel bearing", page 131](#)
- ◆ ⇒ ["2.1.1 Assembly overview - subframe, aluminium subframe, left-hand drive", page 10](#)
- ◆ ⇒ ["2.1.2 Assembly overview - subframe, aluminium subframe, right hand drive", page 15](#)
- ◆ ⇒ ["3.1.1 Assembly overview - subframe, sheet steel assembly carrier, left-hand drive", page 67](#)
- ◆ ⇒ ["3.1.2 Assembly overview - subframe, sheet steel assembly carrier, right hand drive", page 71](#)
- ◆ ⇒ ["2.1 Summary of components - steering gear", page 360](#)
- ◆ ⇒ ["6.5 Loosen and tighten cardan shaft screwed connection", page 164](#)
- ◆ ⇒ ["1.2 Tightening torque of the wheel screws", page 321](#)
- ◆ ABS speed sensor ⇒ Brake systems; Rep. gr. 45
- ◆ Brake disc, brake caliper, brake carrier ⇒ Braking systems; Rep. gr. 46

