



### 1 - Light bulb for daylight driving light P13W

- Renew  
⇒ ["1.5.5 Replacing bulb for daylight driving light P13W", page 117](#) .

### 2 - Light bulb for fog light H7

- Renew  
⇒ ["1.5.4 Replacing bulb for fog light H7", page 116](#) .

### 3 - Rubber cap

### 4 - Control motor for headlamp range control - V48- left or - V49- right

- Removing and installing  
⇒ ["1.9 Removing and installing headlight range control motor", page 125](#)

### 5 - Light bulb for low beam light H4

- Renew  
⇒ ["1.5.1 Replacing bulb for main beam and low beam H4", page 113](#) .

### 6 - Plastic cap

### 7 - Light bulb for the parking light W5W

- Renew  
⇒ ["1.5.2 Replacing W5W bulb for the parking light", page 114](#) .

### 8 - Bolts

- 1.5 Nm

### 9 - Cap for turn signal bulb

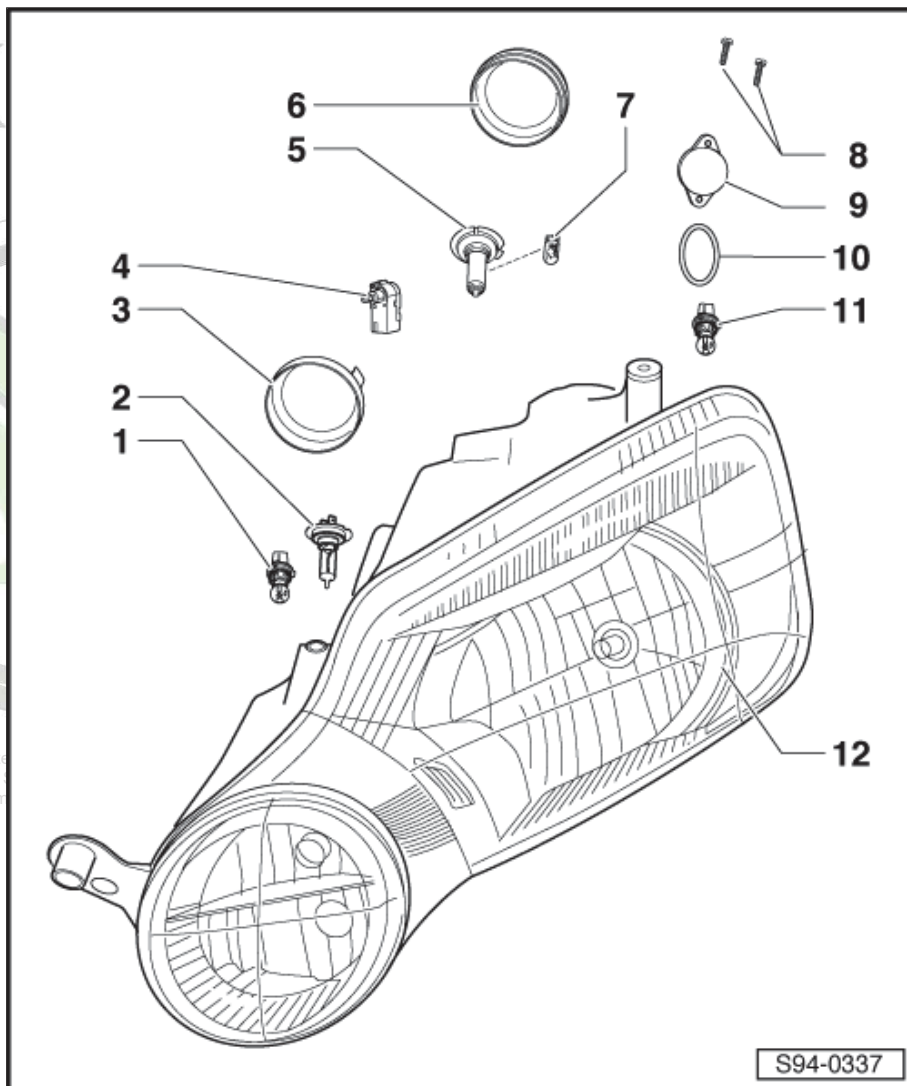
### 10 - O-ring

### 11 - Light bulb for turn signal light HPC24WY

- Renew ⇒ ["1.5.3 Replacing bulb for the turn signal light", page 115](#) .

### 12 - Headlight housing

- Removing and installing ⇒ ["1.3 Removing and installing headlight", page 111](#)
- adjust ⇒ ["1.4 Adjusting headlights", page 113](#)



## 1.2 Summary of components headlight - vehicles as of MY 2014

### 1 - Headlight housing

- ☐ Removing and installing  
⇒ [“1.3 Removing and installing headlight”, page 111](#)
- ☐ adjust  
⇒ [“1.4 Adjusting headlights”, page 113](#)

### 2 - Plastic cap

### 3 - Light bulb for main beam H7

- ☐ Renew  
⇒ [“1.6.2 Replacing bulb for main beam H7”, page 118](#)

### 4 - Light bulb for the turn signal light PY24W

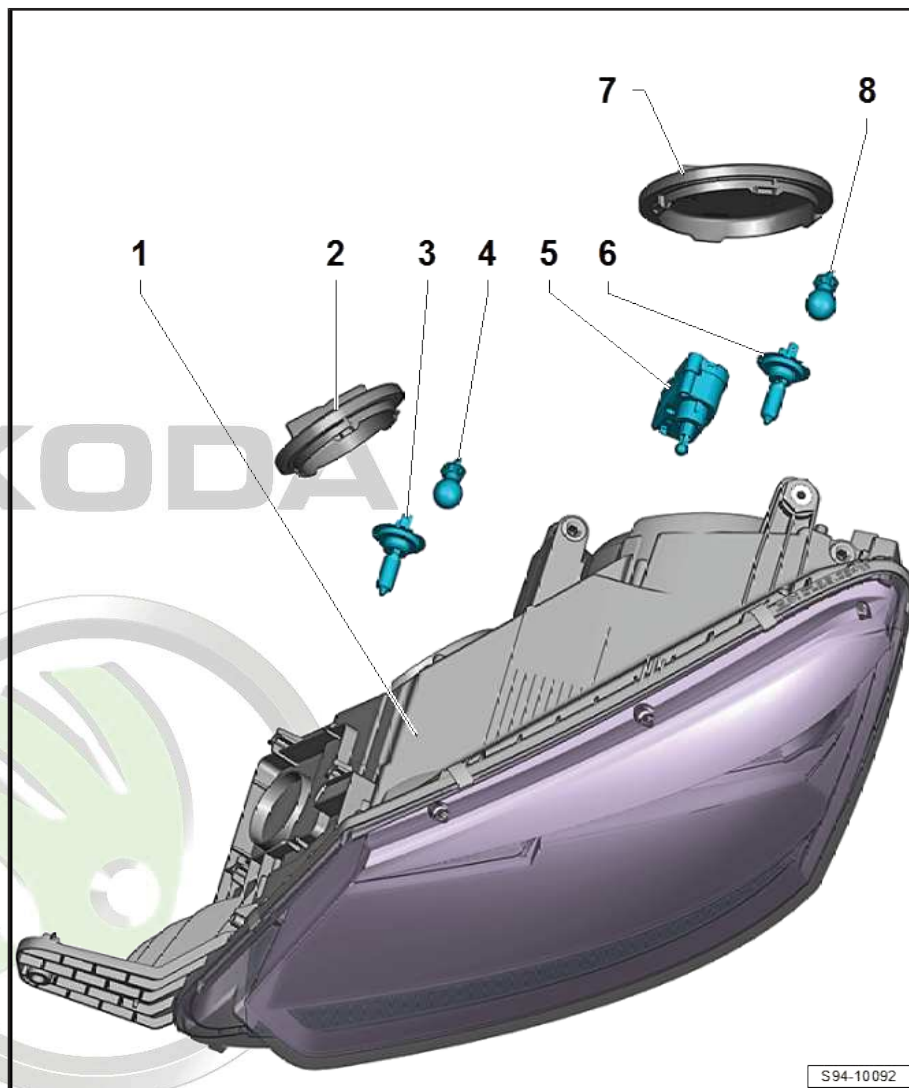
- ☐ Replacement set- light bulb, cap, bolts, seal
- ☐ Renew  
⇒ [“1.6.4 Replace bulb for turn signal light PWY24W”, page 121](#)

### 5 - Headlight range control motor

- ☐ Removing and installing  
⇒ [“1.9 Removing and installing headlight range control motor”, page 125](#)

### 6 - Light bulb for low beam H7 LL (LL - Long-life)

- ☐ Renew  
⇒ [“1.6.1 Replacing H7LL bulb for low beam light”, page 117](#)



### 7 - Plastic cap

copyright. Copying for private or commercial purposes, in part or in whole, is not permitted unless authorised by ŠKODA AUTO A. S. ŠKODA AUTO A. S. does not guarantee or accept any liability for the use of the information provided in this document by ŠKODA AUTO A. S.

### 8 - Bulb for daytime running light and side light PW24W

- ☐ Renew ⇒ [“1.6.3 Replace bulb for daytime running light and side light PW24W”, page 120](#)

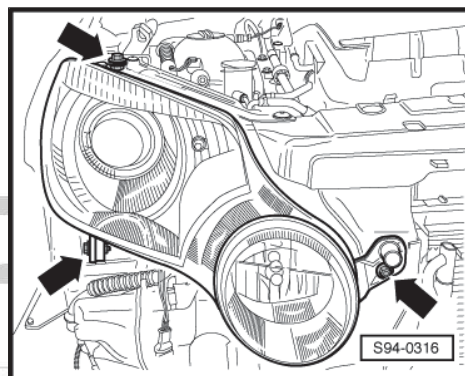
## 1.3 Removing and installing headlight

### Removing

- Switch off the ignition and all electrical components.
- Remove front bumper ⇒ Body Work; Rep. gr. 63 .
- Unplug the connector from the headlight.
- Unscrew fixing screws -arrows-:



Vehicles up to MY 2013

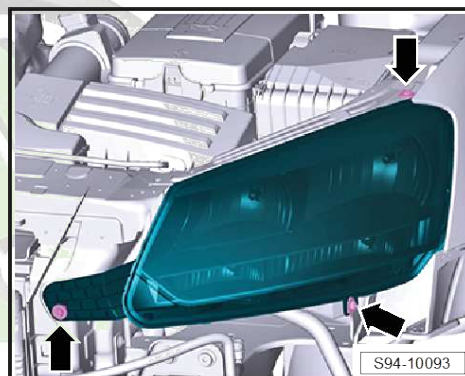


Vehicles as MY 2014

- Remove the headlight.

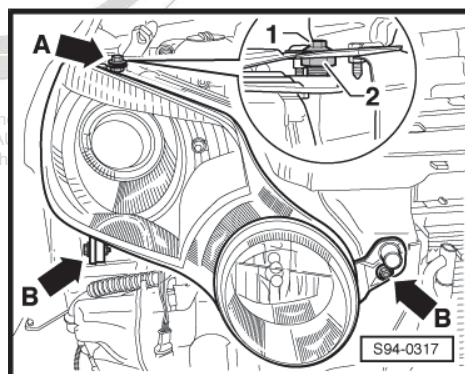
#### Install

- Slightly fasten the headlight with screws -A- and -B-:



Vehicles up to MY 2013

Protected by copyright. Copying for private or commercial use without the written permission of ŠKODA AUTO A. S. ŠKODA AUTO A. S. is not permitted with respect to the correctness of information in this document.

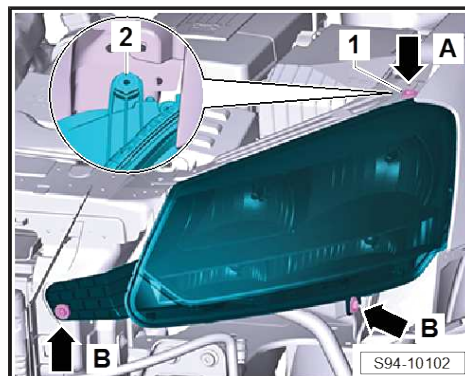


Vehicles as MY 2014

- Align the headlight according to the contours of the wing (maintain the gap size ⇒ Body Repairs; Rep. gr. 00 ).

Slacken the fixing screw -A (1)- to align the headlight and subsequently change the height of the stop by turning the adjusting nut -2- (left-hand thread).

- After aligning the headlight according to the contours of the vehicle body, fasten all the fixing screws for the headlight.
- Install bumper.
- Check the headlight beam setting, adjust where necessary ⇒ Maintenance ; Booklet Yeti .



#### Tightening torques

Headlight fixing screws	3.5 Nm
-------------------------	--------